

3.2 Target vocabulary – growth

Topic: Plants
Subtopic: Growth
Activity type/skill: Word list
Literacy focus: Vocabulary

Objective

- Introduce target vocabulary.
- Experience spoken and written forms and their usage.

What you need

- Student worksheet (see next page)
- [Audio track 3.2](#)

What to do

1. Play track 3.2 (Track 2 for this topic) and have students look at both pages of the student worksheet as they hear each word and its extensions (tense variations and plurals) and the word in a defining context.

air	branch	carry	drop	enough
flower	fruit	gas	hold (up)	leaf
light	root	seed	soil	space
system	tube	turn	waste	wind

2. Have students listen again and repeat the words.
3. Have students copy the words in the spaces.
4. Point out plurals (for example, 'Roots hold a plant in the soil') and changed verb forms ('If something holds up something, it supports it').

Extending the activity

- Use the lists for revision and reference.

Activity two



Track 2

air

noun



_____ is the mixture of gases that we breathe.

There is _____ around the earth.

branch

noun



A _____ is part of a tree.

It grows out of the tree trunk.

carry

verb



Pipes _____ water into our houses.

They _____ waste out of our houses.

drop

verb



If something _____, it falls straight down.

enough

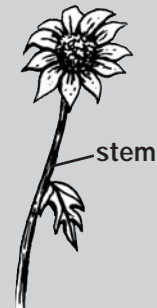
determiner

We will be able to see it when there is _____ light.

Have you got _____ to eat?

flower

noun



A _____ can be beautiful.

A _____ is part of a plant. It is usually coloured and grows on a stem.

fruit

noun



A _____ is something that has seeds or a seed inside. It grows on a plant.

We eat the _____ of many plants.

gas

noun

_____ are not liquid or solid.

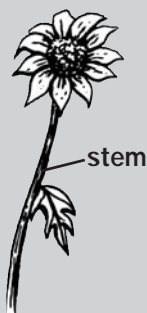
Oxygen and carbon dioxide are _____.

hold (up)

verb

If something _____ something, it supports it.

A stem _____ a flower.



leaf

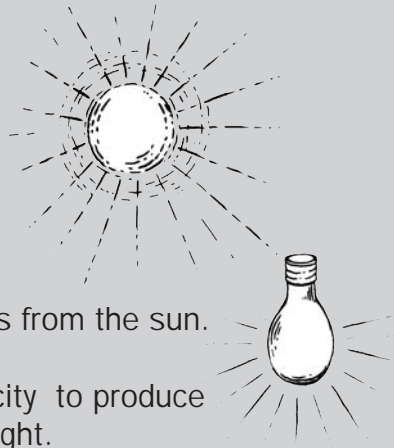
noun

A _____ is part of a plant.



light

noun



_____ comes from the sun.

We use electricity to produce _____ at night.

root

noun



A _____ usually grows under the ground.

_____ hold a plant in the soil.

seed

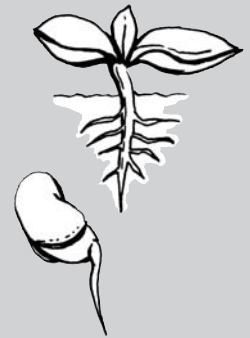
noun



A _____ is the part of a plant from which a new plant grows.

soil

noun

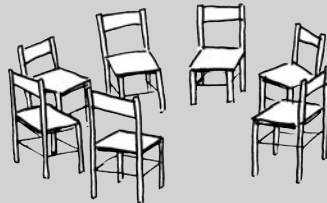


_____ is the top layer of the earth.

Plants grow in _____.

space

noun



A _____ is a place where there is nothing.

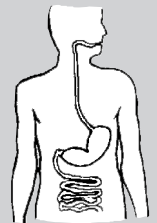
Is there a _____ for one more chair?

system

noun

A _____ is a group of things that work together.

Your stomach is part of your digestive _____.



tube

noun

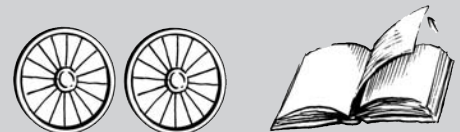


A pipe is a _____.

A _____ is long and hollow and round.

turn

verb



When something _____, it moves to face another way.

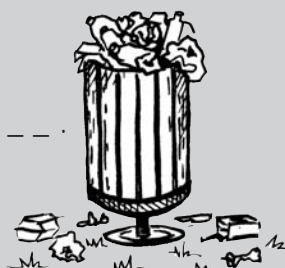
Wheels _____.

You can _____ the page of this book.

waste

noun

Rubbish tins hold _____.



wind

noun

_____ is moving air.

_____ blows.

