

1.68 Information about wētā

Topic: Animals

Subtopic: Describing animals

Activity type/skill: Text organisation

Literacy focus: Writing

Genre: Information reports

Objective

- Recall organisation of an information report.

What you need

- Student worksheet (see next page)

What to do

1. Have students work in pairs to identify parts of the report about wētā on the student worksheet and write the questions on the correct lines.
2. Discuss the results.

Answers:

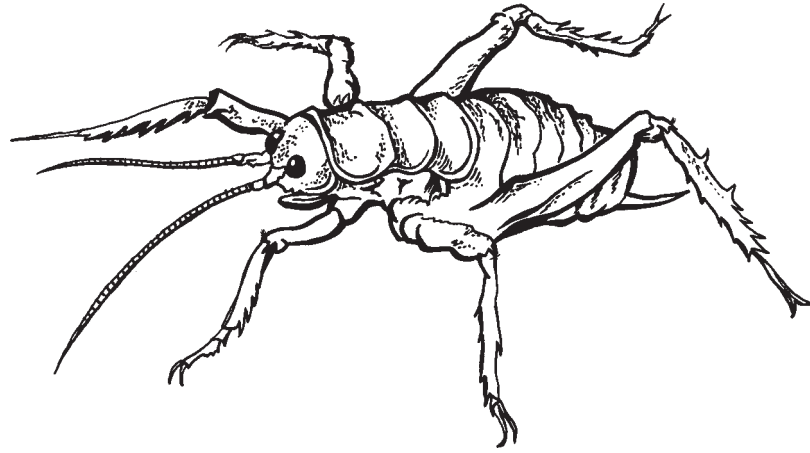
- What are they?
- What do they look like?
- Where do they live?
- What do they eat?
- How do they reproduce?

Extending the activity

- Have students identify parts of other information reports about animals and interpret the headings.

Activity sixty-eight

Weta



Weta are insects.

Weta are very big and heavy. They have large heads, very long antennae and strong legs. Weta have ears on their front legs.

Weta live only in New Zealand. They live in dark places like holes in trees and holes in the ground.

Weta look for food at night. They eat plants, fruit and dead insects.

Female weta lay eggs in places that are warm and wet.

What do they eat?

What are they?

Where do they live?

What do they look like?

How do they reproduce?